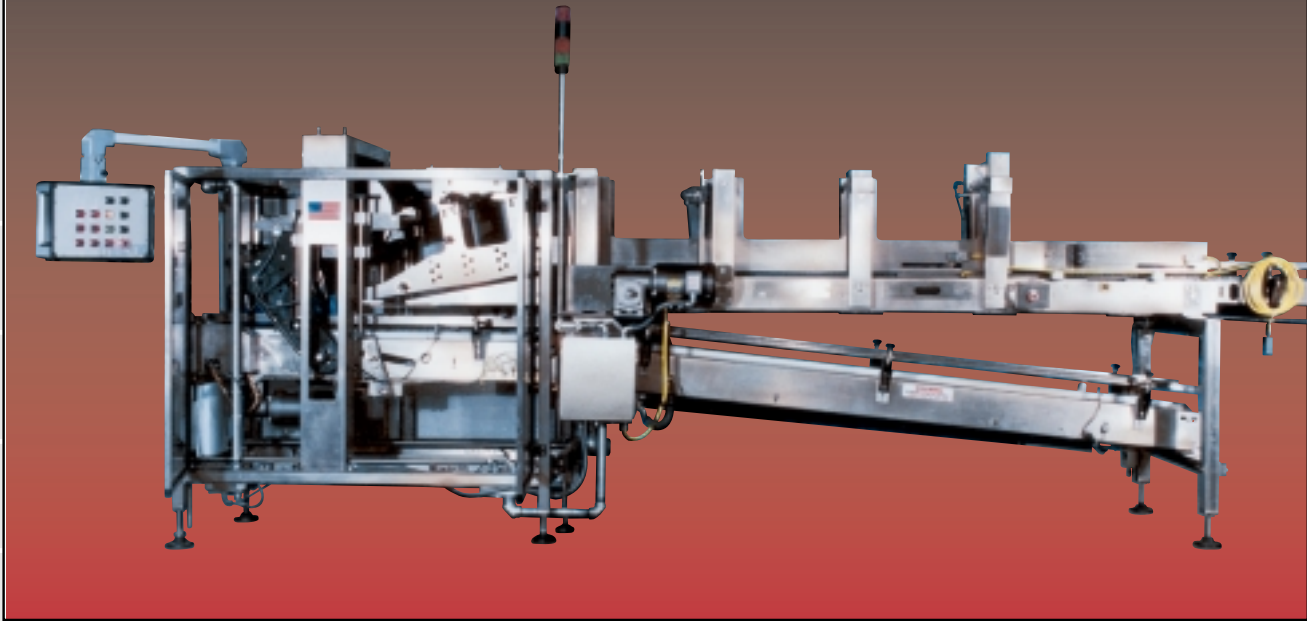


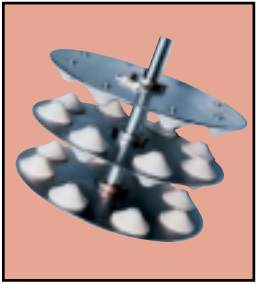
Orbitron II Continuous Motion Packer



Standard Knapp
Standard Knapp

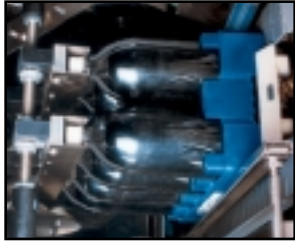
an EMPLOYEE owned company

Orbitron II Features



①

Orbitron's technology advantage begins with the compact rotary product spacing wheel.



②

Bottles entering the neck support assembly are gently lowered into case or tray with little or no drop.



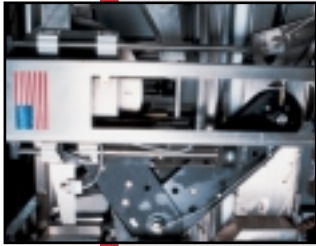
③

The case feed conveyor is power adjustable to accommodate tray height variations.



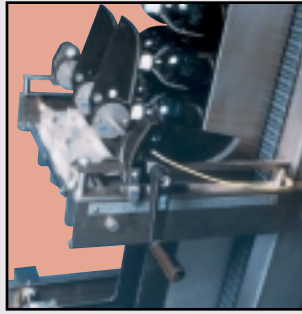
④

Positive positioning change part locators are provided with pre-set stops to allow immediate start-up and production.

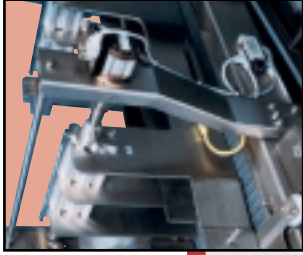


⑤

Direct drive "shear arm" assembly eliminates gearbox backlash for accurate bottle to case timing.

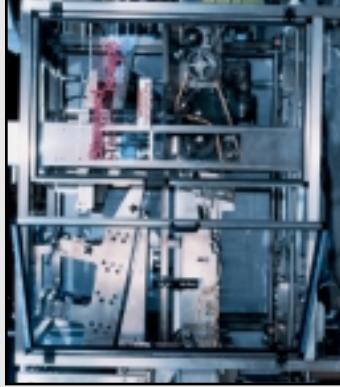


⑥ Single point adjust down product detectors protect product and machine.

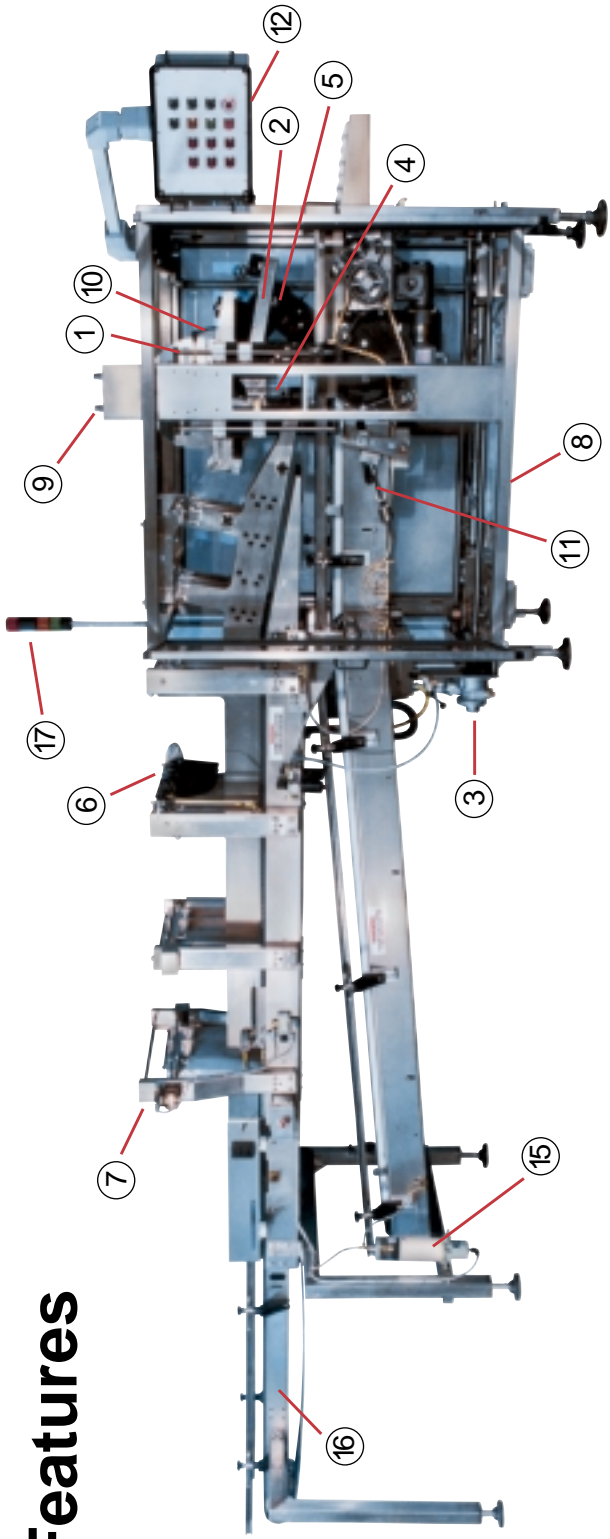


⑦

Patented on-demand oscillator operates only when smooth product flow is interrupted, for continuous operation.



⑧ Compact all stainless steel frame. Full length, electrically interlocked guard doors provide quick access and complete safety.



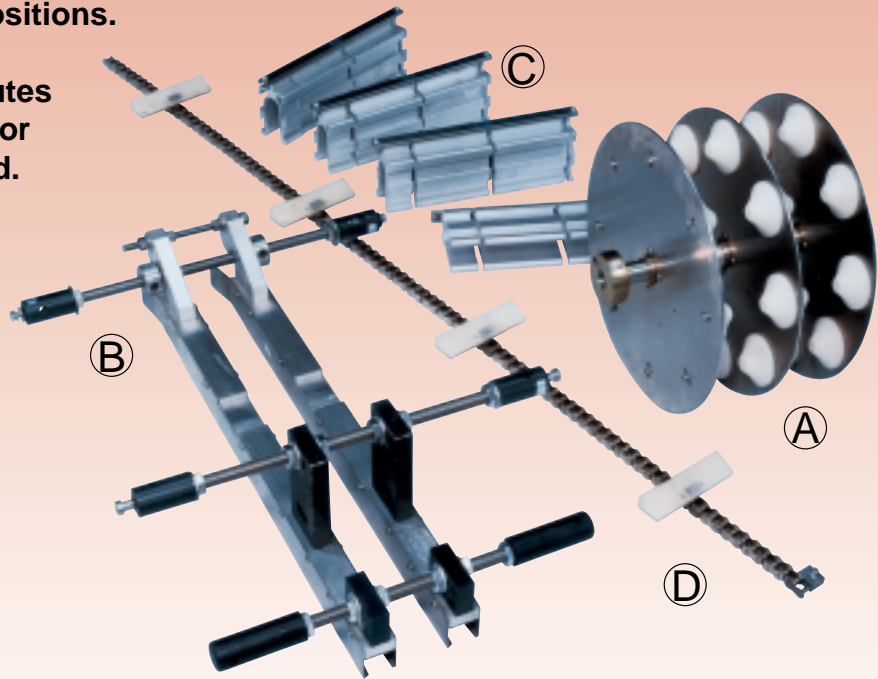
- ⑨ Screw type adjustment points for easy changeover.
- ⑩ Integral quick-adjust handles for minimum tool requirements.
- ⑪ Case lug chain take-up mounted outside frame for easy access.
- ⑫ Operator control station mounted via 180° swivel arm provides maximum convenience and safety in setup and operation. "Handsless" operation.
- ⑬ Remote mounted main electrical enclosure provides flexibility of location.
- ⑭ NEMA 4x SST electrical boxes mounted on machine allow full washdown.
- ⑮ Optional automatic lubrication system reduces maintenance requirements and enhances machine longevity.
- ⑯ Five foot infeed extension for loose product sweep-off. Delete option for multipack-only applications.
- ⑰ Three color indicating beacon for quick and easy machine status.

The Standard Knapp Advantage

Change Parts: Compact – Lightweight – Low Cost

Change parts are “snap-in” style that lock into pre-set positive positions. Changeover is easily accomplished in 15-20 minutes with *one person*. No hoists or extra personnel are required.

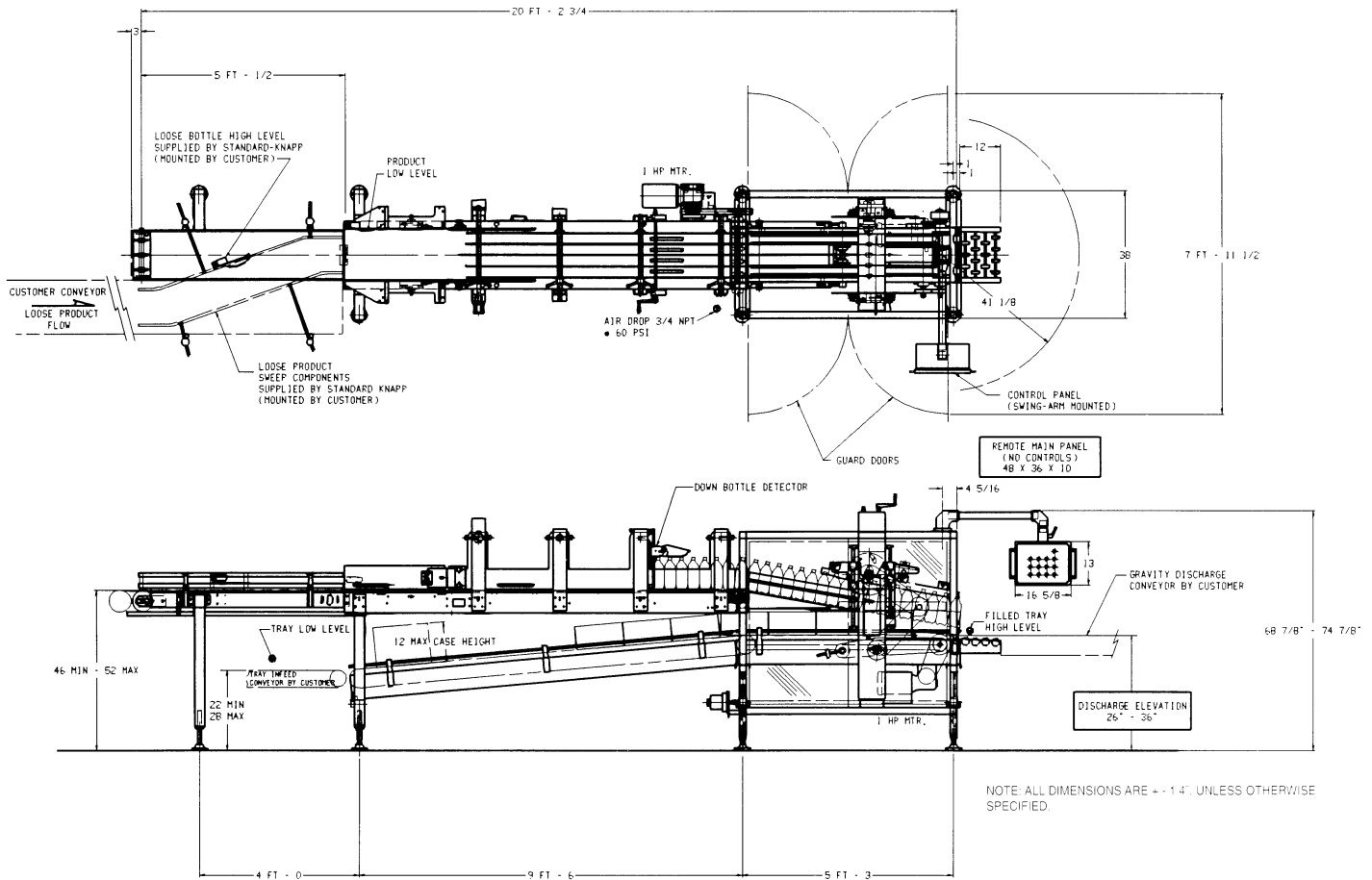
- Ⓐ Product Spacer Wheel
- Ⓑ Neck Guide Support Assembly
- Ⓒ Drop-in Lane Guide Spacers
- Ⓓ Case Timing Lug Chain



Orbitron II Available Options

- **Overhead flight lug assembly** for non-carbonated/compressible products
- **Roller flap guides** for two-flap cases (major flaps)
- **Alternate PLC models** available to suit customer needs
- **Message display** for descriptive operational information
- **Data Table Access Module (DTAM)** provides access to programmable speeds
- **Extended powered discharge conveyor** for tall products

Orbitron II Floor Plan



Specifications*

Speed: Up to 65 cpm†

Trays/Cases: Corrugated
Plastic
1/4 to full depth

Pack Patterns: 2 x 3, 2 x 4
Loose: 3 x 4, 3 x 5
Multipacks: 4, 6, 8, 12 packs

Infeed: Straight in for multipacks,
sweep off for loose

Products:

PET-Bottles: 16 oz., 20 oz.,
32 oz., 64 oz., 0.5 L, 1 L,
1.5 L, 2 L, 3 L
Glass: 10 oz., 12 oz., 16 oz., 20 oz.
carbonated and non/low
carbonated
Cans: 12 oz.

Discharge: Gravity roller conveyor
supplied by customer, adjustable
with case discharge height.

Controls: 24 vDC with A-B SLC 500

Electric Motors: Two 1 HP
motors with variable
frequency drives

Machine Mounted Enclosures:
NEMA 4x

Main Control Enclosure: NEMA 4,
painted steel-it

* Specifications subject to change without notice.

† Depending on product and cases.



STANDARD KNAPP, INC.
127 Main Street, Portland, CT 06480
SALES PHONE: (860) 342-1100, ext. 239
SALES FAX: (860) 342-0782
EMAIL: info@standard-knapp.com
WEB SITE: www.standard-knapp.com